

Mapping a Drive on BMISI (Linux)

How to map a drive to the BMISI RES server (bmiisi.chmcres.cchmc.org) in Linux.



Download a PDF copy of this document: [RESITHUB-MappingBMISILinux-230323-1445-678.pdf](https://resithub-mappingbmiisilinux-230323-1445-678.pdf)

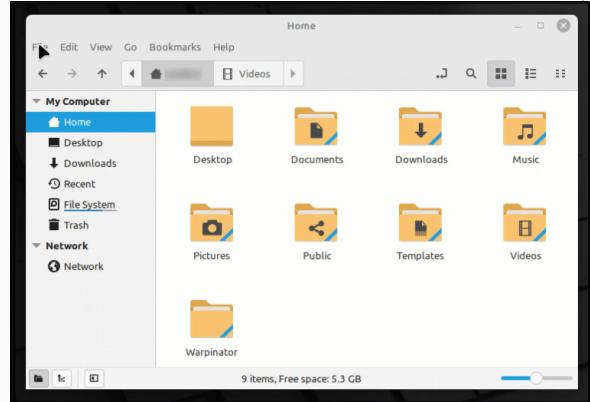


Getting Access to a Drive

- If access has not yet been requested for you, you can submit a request yourself in Permissions Manager. The submitted request will need to be approved by any one of the authorizers, who are automatically notified when you submit the request. When the authorizer has handled your request, you will be automatically notified via an email from Permissions Manager.
- After being granted access to a drive, you must restart your computer before mapping a drive to it. If you are denied access to a drive, please restart your computer and try mapping it again.
- Authorizers can grant access to users via the Permissions Manager. **Authorizers do not automatically have access, but they can grant access to themselves.**
- The BMISI Permissions Manager can be accessed here: <https://dp.research.cchmc.org/DP/>.
- Instructions on how to use Permissions Manager are here: <https://confluence.research.cchmc.org/x/dgNcAw>.
- You must be connected to a CCHMC network to access a project drive.
 - If you are on-site this means your computer is plugged-in with an ethernet cable or you are connected to the "chmc-bus" wireless. The "childrens-guest" wireless will not allow you to access project drives.
 - If you are remote you must be connected to either the CORP VPN (connect.cchmc.org) or RES VPN (asa.research.cchmc.org). Both RDS6 and BMISI project drives are accessible through either VPN.

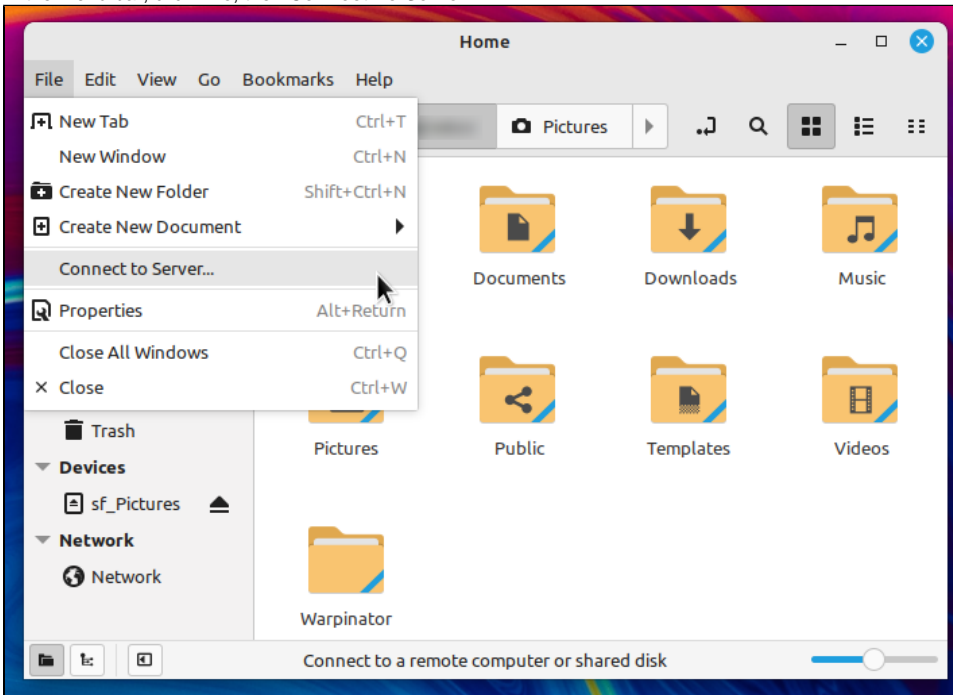


Step-by-step animation of Mapping a Drive on BMISI with Linux. Click to enlarge.



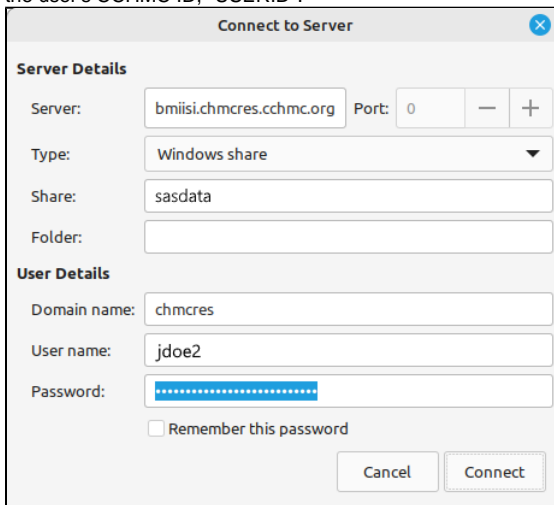
1. Open the **File Manager** if it is not open already.

2. In the menu bar, click **File**, then **Connect To Server**:



3. For the Server Details section:

- The "Server" field, type the address of the shared volume (or folder) you would like to mount, for BMIISI drives this is "**bmiisi.chmcres.cchmc.org**".
- The "Type" field should have "**Windows share**" selected.
- The "Share" field should have the **name or number of the drive**.
- The "Folder" field should have the **name of the folder**.
- Examples: For the folder \\BMIISI.CHMCRESCCHMC.ORG\SASDATA the Share would be "SASDATA" and the folder would be blank. For a user's home \\BMIISI.CHMCRESCCHMC.ORG\HOME\USERID the Share would be "HOME" and the folder would be the user's CCHMC ID, "USERID".



4. For the User Details section:

- The "Domain name" should be **chmcres**.
- The "User name" should be your **CCHMC User ID**.

- The "Password" field is your **CCHMC password**.

The screenshot shows a 'Connect to Server' dialog box with the following fields and options:

- Server Details:**
 - Server: bmiisi.chmcres.cchmc.org
 - Port: 0
 - Type: Windows share
 - Share: sasdata
 - Folder: (empty)
- User Details:**
 - Domain name: chmcres
 - User name: jdoe2
 - Password: (masked with dots)
 - Remember this password
- Buttons: Cancel, Connect

5. Then click the **Connect** button. The drive contents will display.

Getting additional help

If there are still any issues after reading these instructions and any help is still needed, please email help-rds@bmi.cchmc.org or call the Service Desk at 636.4100 for further assistance.